

Crown Hills holds preview of newest phase this weekend

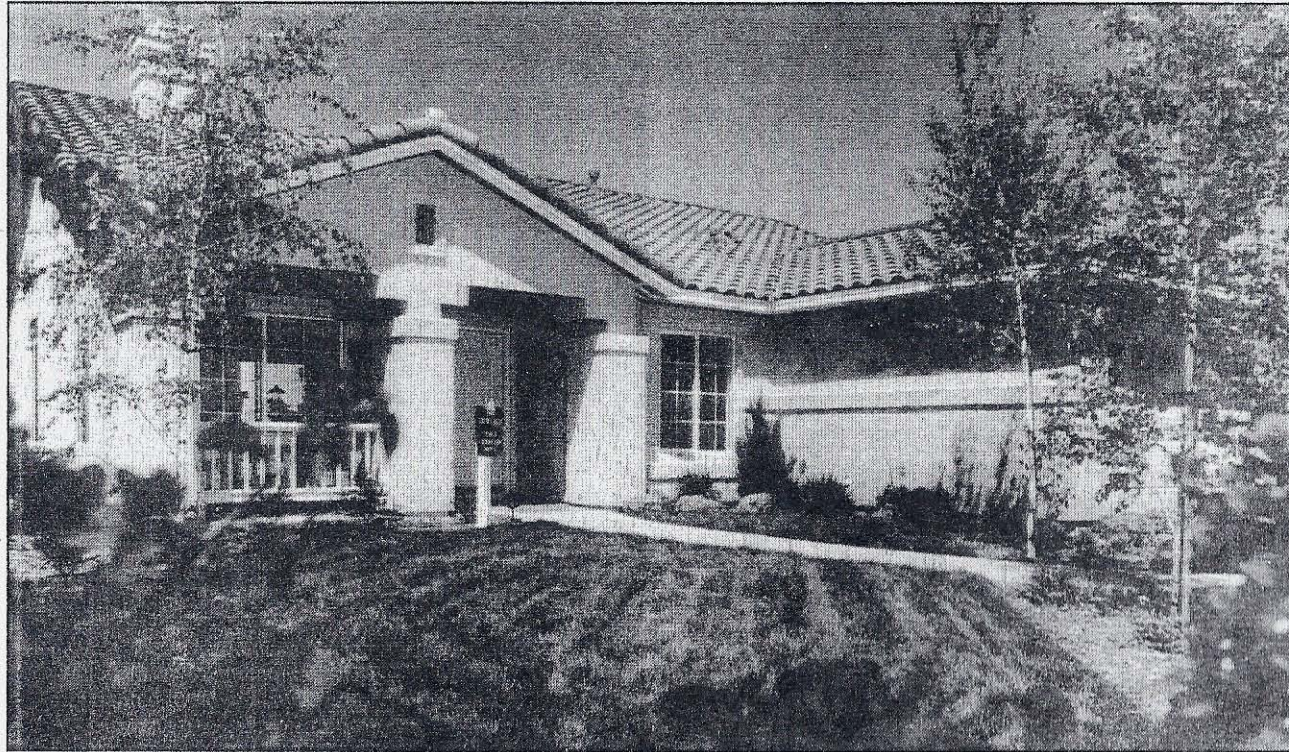
Home shoppers can get a special preview this weekend of next Saturday's official release of the newest phase of 14 homes at the mountaintop view community of Crown Hills in Alpine, according to the builder.

The opening of Phase 11-A comes a few weeks after the debut of Phase 10-B.

Some 216 families having selected Crown Hills' HUD-award winning residences, and 65 percent of the planned 333-home neighborhood is now sold.

As word of the recent U.S. Dept. of Housing and Urban Development (HUD) award spreads, more and more prospective home buyers are visiting the model homes to see for themselves, according to the builder. Crown Hills was one of three new-home developments in the nation and the only one in Southern California to receive the first HUD "Building Innovation and Affordability Award" in January.

The builder was cited for homes that are affordably-priced and for construction innovation involving an advanced wall and roof system tested more than twice as energy efficient as conventional lumber framing. Crown Hills is the first private residential community in the United States to utilize this technology, which was previously used mainly for custom-home building, according to the builder.



At RJT Builders' Crown Hills in Alpine, visitors can tour six three- and four-bedroom model residences priced from \$164,900 to \$191,900.

"Our commitment to building these homes of extraordinary quality at an attractive price is reflected in continuing public

interest in the HUD award," commented John D. Hensler, president of RJT Builders, builder of Crown Hills.

Visitors can tour six three- and four-bedroom model home designs priced from \$164,900 to \$191,900. The homes range from

1,256 to 1,837 square feet, plus attached two-car garage with finished interior.

A recent survey of buyers by the

builder shows a wide-ranging demographic profile of various occupations, ages, and previous places of residence. Asked what they like best about the community, most say they "love the country," appreciate the quality of construction, and enjoy the openness of various floor plans.

Within the Crown Hills community, amenities include a spacious recreation center with Olympic-sized pool, spa and

Homes range from 1,256 to 1,837 square feet, plus attached two-car garage.

tennis courts, nature trails for hiking, and RV parking and storage.

Models are open from 10 a.m. to 6 p.m. daily. For information, call 1-(888)-LIVE ALPINE or (619) 445-1332. Crown Hills is within 20 minutes of Mission Valley, 28 minutes to downtown San Diego and within eight minutes of major shopping. Take I-8 east, exit at Tavern Road and drive north to the models and sales office.